

Shakti Slip Start Synchronous Run Motor (S4RM Surface Motor)

Shakti Slip Start Synchronous Run Motor (S4RM) is a newly launched technology of super efficient motor with high power factor. The motor with this technology starts asynchronously and runs at synchronous speed in steady state, thereby leading to combined advantages of induction (self-start) and synchronous motor (high efficiency). The fast payback makes it ideal for use in line connected environment.

APPLICATIONS :

- Pumps
- Compressor
- Fans and Blowers
- Flour mill, Rolling mill, Mixers
- Machine Tools
- Textile & Plastic Machineries
- Agriculture & Food processing
- Cranes, Hoist & Lifts
- Cooling tower

FEATURE :

- Motors are fitted with:
 - a. Dynamically balanced rotors.
 - b. Double shielded anti-friction bearings.
- Motor are protected against in-grace of moisture and dust particles with Ip55 protection.
- The cooling fins designs are based on three dimensional heat transfer principle.
- Minimum friction losses
- Low noise smooth running motor
- Reliable operation
- Easy maintenance
- Low payback period
- VFD less operation.
- Power factor close to unity

TECHNICAL SPECIFICATION :

- Motor type : Line Start Permanent magnet Synchronous Motor
- Enclosure : TEFC (Totally enclosed fan cooled)
- Frame : 80 to 132
- Mounting : Foot cum flange B35 & Face V1/V18 & Foot Mounted B3
- Rated Speed : 3000/3600 RPM
- Connection : 50 Hz, 380-415 V star /delta STAR (0.5-5.0 HP)/DELTA (7.5-10.0 HP)
- Rated Power : 0.37 kW to 7.5 Kw
- Voltage : 380-415 50 Hz/460 60Hz
- Ambient temperature : -20°C to +60°C
- Altitude : Should be below than 1000 meters above sea level
- Relative humidity : up to 100%
- Duty/Rating : S1
- Insulation class : Class 'H'
- Degree of protection : Ip55
- Cooling Method : IC411/Shaft mounted fan
- Efficiency Class : IE4

Material Code		Rated Output	Frame Size	Voltage	Full Load Speed	Full Load Current	Efficiency [%]	Power Factor
Flange	Face	kW	mm	V	RPM	A	100	1.0
NA	9000024638	0.37	80	415	3000	0.8	85	0.72
NA	9000024639	0.55	80	415	3000	1.1	86.7	0.81
NA	9000024640	0.75	80	415	3000	1.4	86.5	0.84
NA	9000024835	1.1	90	415	3000	1.8	87.2	0.94
NA	9000024834	1.5	90	415	3000	3.1	88.3	0.77
9000027642	9000024833	2.2	90	415	3000	3.9	90.5	0.88
9000024689	9000024688	3	100	415	3000	5.2	88.9	0.91
9000024455	9000024494	3.7	100	415	3000	6.3	89.5	0.91
9000024644	9000024456	5.5	132	415	3000	11.5	90.8	0.74
9000024645	9000024457	7.5	132	415	3000	13.9	91.7	0.81



India : Toll Free No. 1800 103 5555

Other Countries : +91-7292 410500

SHAKTI PUMPS (INDIA) LIMITED

Plot No. 401, 402, & 413, Industrial Area, Sector - 3, Pithampur - 454774,
Dist. - Dhar, (M.P.) - INDIA, E-mail: info@shaktipumps.com,
Visit us at : www.shaktipumps.com

Authorised Dealer / Distributor :

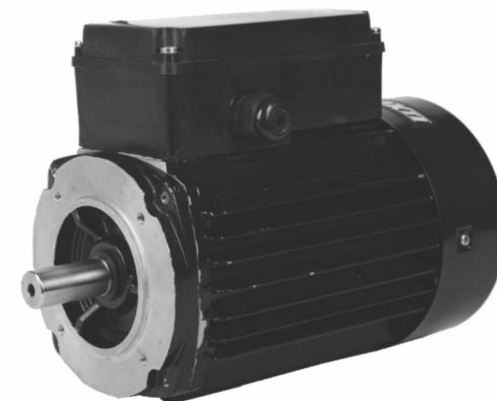


TAKING 'MAKE IN INDIA' FORWARD.



Shakti Slip Start Synchronous Run Motor

S4RM Surface Motor



SHAKTI

THE POWER OF INNOVATION, EFFICIENCY & TECHNOLOGY.



SAP: 2000020861
VC: Sept./2023-24/L2/0000