



A1 SMART STARTER

Everything You Can Think



SHAKTI

THE POWER OF INNOVATION, EFFICIENCY & TECHNOLOGY.

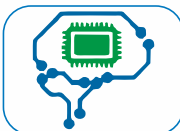
Key Features



ENSURES LONGER LIFE
OF THE MOTOR



BETTER PROTECTION



INTELLIGENT ELECTRONIC
FUNCTIONALITY



STRESS FREE OPERATION
OF THE MOTOR



USER FRIENDLY DISPLAY



GPRS ENABLED &
BLUETOOTH CONNECTIVITY



REMOTE
CONTROL



INBUILT AUTO
SWITCH



ABOUT THE PRODUCT

The conventional starters provide limited functionality such as start, stop and basic protections but, what if a starter is smart enough to support everything you can think.

Shakti presents a next generation, IoT enabled smart motor interfacing product which ensures smooth starting, advanced protection and monitoring via integrated micro computer. Incorporation of various advanced features in a single product makes it A1(All in one) Smart Starter (A1SS). The A1SS also comes with IP54 enclosures which provide fair protection against water and dust particles.

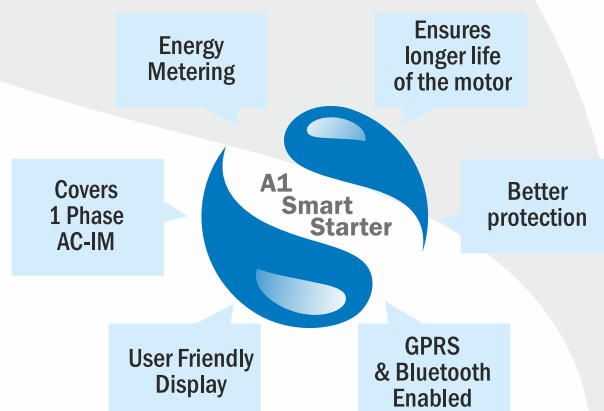
APPLICATION

Suitable for 1-Phase AC induction motor.

BENEFITS

- Smooth operation
- Inbuilt Auto Switch
- Ingress protection includes overload, under/over voltage trip, transient surge, pump stalled trip.
- IP 54 design
- Seven segment display for easy monitoring.
- Wireless connectivity via Bluetooth and GPRS.
- Inbuilt Space for Capacitor

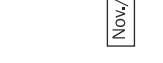
FEATURES



TECHNICAL SPECIFICATION

Specifications	1-phase								
	Model 1				Model 2		Model 3		
Output Power	0.5-1hp	1.5hp	2hp	3hp	4hp	5-5.5hp	7.5hp	10-12.5hp	15hp
Rated Current	7 A	10 A	13 A	15 A	20 A	27 A	36 A	50 A	69 A
Dimension in mm(WxLxH)	208x390x75				240x460x75		408x570x110		
Working Temperature	-25 °C to +55 °C								
Ingress Protection	IP 54 (Dust & Rain Protected)								
Input Configuration	Single phase, 3 wire								
Nominal Input voltage	230V 50/60Hz, SINGLE PHASE								
Control Method	Auto/Manual/Remote/Sensors								
Connectivity	GPRS and Bluetooth								
Patented Features	Energy Metering, Dry Run Protection, Water Level Sensors (2 Tanks)								

All specifications and information are given with good intent, errors are possible and products may be subject to change without notice. Pictures may differ from actual products depending on local market requirements and regulations. A pump system consists of a controller, motor and pump end.



India : Toll Free No. 1800 103 5555

Other Countries : +91-7292 410500

SHAKTI PUMPS (INDIA) LIMITED

Plot No. 401, 402, & 413, Industrial Area, Sector - 3, Pithampur - 454774,

Dist. - Dhar, (M.P.) - INDIA, E-mail: info@shaktipumps.com,

Visit us at : www.shaktipumps.com

Authorised Dealer / Distributor :